

# World Silver Bullion

[Home](#)   [North America](#)   [Africa](#)   [Asia](#)   [Australia](#)   [Europe](#)   [South America](#)



## Silver Somalian African Elephant

1 Troy Ounce of .999 Silver

Mint.....Bavarian State Mint  
Weight.....31.103Grams  
Diameter.....39.0 mm  
Edge.....Reeded  
Purity.....999 Silver  
Years.....2004 - Present

### 2004 - Present

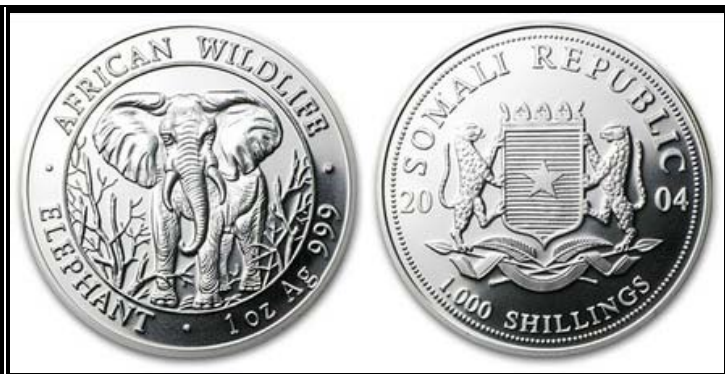
Silver Elephants - The Silver Elephant Coin is one of the most fascinating coins in the African Wildlife Coin Series, which commemorates the characteristic fauna of Africa. Minted by the Das Bayerisches Hauptmünzamt Mint in Munich, Germany, the Silver Elephant coins were first issued in 2004. With a denomination of 100 shillings, the German-manufactured 1 oz Silver Elephant Coin has begun to attract attention from coin collectors all over the world.

One of the most interesting aspects of the Silver Elephant Coin is the location of the coin's production: the Das Bayerisches Hauptmünzamt Mint, or the Bavarian State Mint. Over 800 years old, the Bavarian State Mint has been producing coins since 1158, and it is the oldest company in Munich. One of the five German state mints, the Bavarian State Mint produces collector coins, medals and seals.

Besides its place of manufacture, another of the Silver coin's desirable attributes is its striking design. Celebrating the beauty of the animal kingdom, the Silver Elephant Coin portrays one of the largest mammals found on the African plains: the elephant. Retaining the same design since the Silver coin's release, the obverse of the Silver Elephant Coin depicts two leopards supporting a shield and five-pointed star. Beneath the leopards appears a ribbon draped over two crossed lances and two crossed palm fronds. However, unlike the obverse, the reverse of the Silver Elephant Coin changes annually but always features an illustration of a majestic elephant in its natural habitat.

2004 - Mintage: 5,000

2005 - Mintage: 5,000



2006 - Mintage: 5,000



2007 - Mintage: 5,000



2008 - Mintage: 5,000



2009 - Mintage: 130,000



2010 - Mint Variety with Reverse of 2009



2010 - Mintage: 120,000



2011 - Mintage: 170,000



2012 - Mintage: 80,000





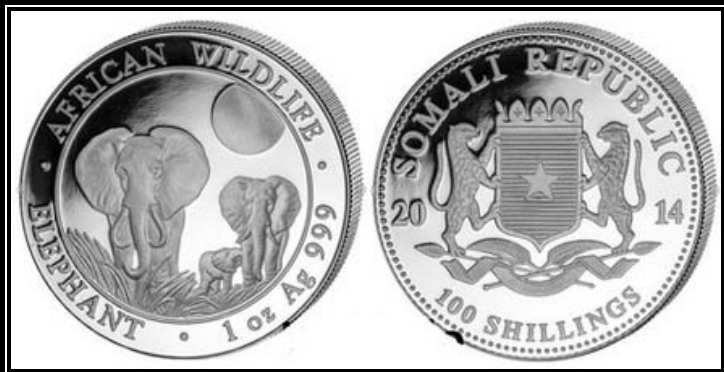
2013 - Mintage: 130,000



2014 - Mintage: TBD



2015 - Mintage: TBD



2016 - Mintage: TBD

