

Gobrecht Dollar Terminology- Still Not Clear to Me!

OK, there is a Dark Side example in all of this...

I asked in another forum proper nomenclature for the Gobrecht \$'s. The 1st 1000 struck for circulation were dated 1836 and struck to the previous weight standard of 416 grains, regular coin orientation and with the eagle flying upward. These are called "originals".

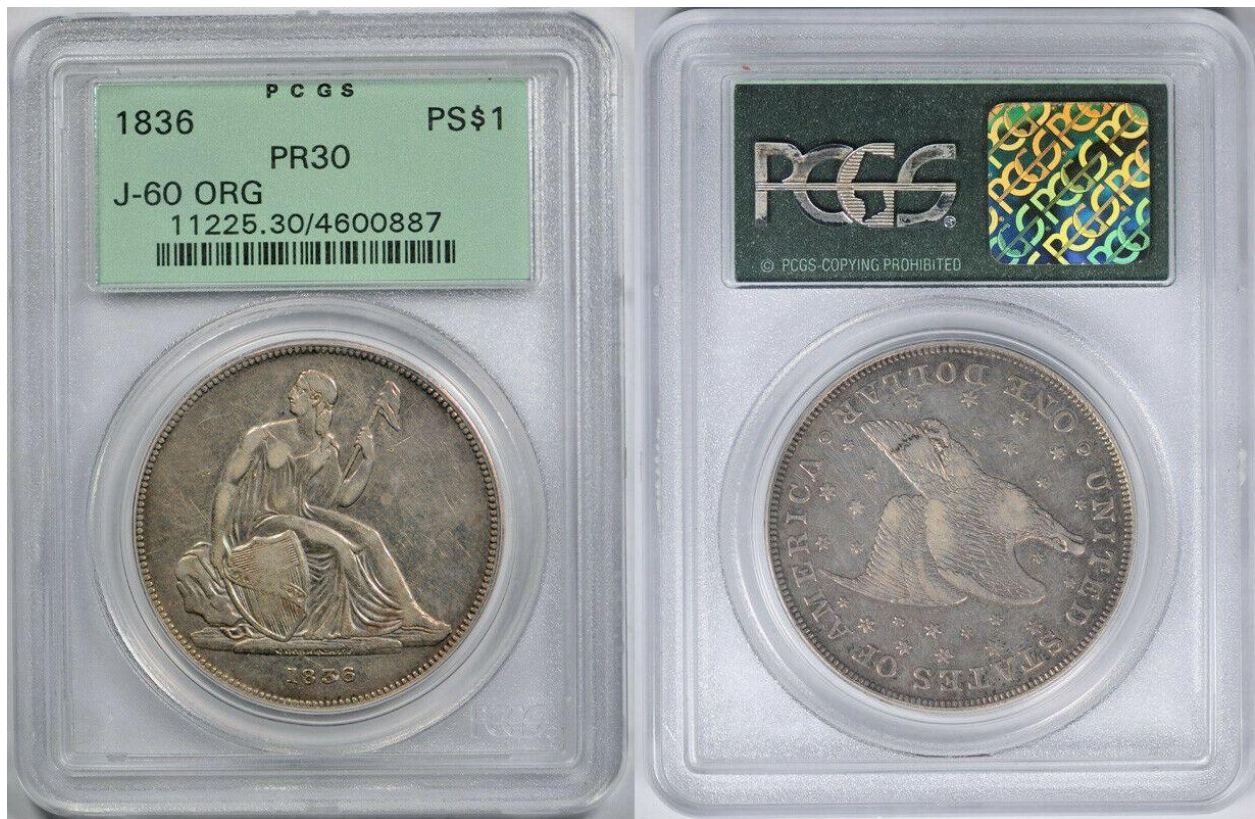
The next 600 struck in 1837 were to the new weight standard of 412.5 grains, also dated 1836 and in medal turn with the eagle flying "level". These have been identified as "restrikes" by many including some of the TPGs; could also be called "second originals" as I saw in a Heritage auction description.

There were also coins dated 1838 and 1839, with the 1838's being considered patterns and the 1839's struck for circulation.

And of course there were "restrikes" struck from the late 1850's to 1870's for collectors.

And to make it even more confusing (at least to me) there are TPG True View images rotating the reverses...

The 1st image is of an "original" 1st strike; label states "J-60 ORG".



The 2nd image is of one from the 2nd minting; label states "Original- Medal Alignment. And it goes a little off the rails with the True View image! Not sure what the intention was for rotating the reverse!



The 2nd is my example; label states "Proof J-60 Restrike".



The 3rd is from the Heritage auction (image courtesy HA.com) of another from the 2nd minting.



And I just saw a friend's 1839 "restrike" today, which I believe is one of the 1850's+ "restrikes"; again, just to add to (my) confusion is the rotated TPG image!



And the final image chuckle for these is this one...



So, in my mind, there are two strikes of 1836 dollars for circulation- 1 I would refer to as 1st strikes, and the 2nd as 2nd strikes.

The "coins" struck later strictly for collectors I would refer to as restrikes.

I do wonder what the correct terminology for a 2nd strike/"restrike" struck from counterfeit dies should be- "Chinese 2nd strikes"?

Best, Jack.